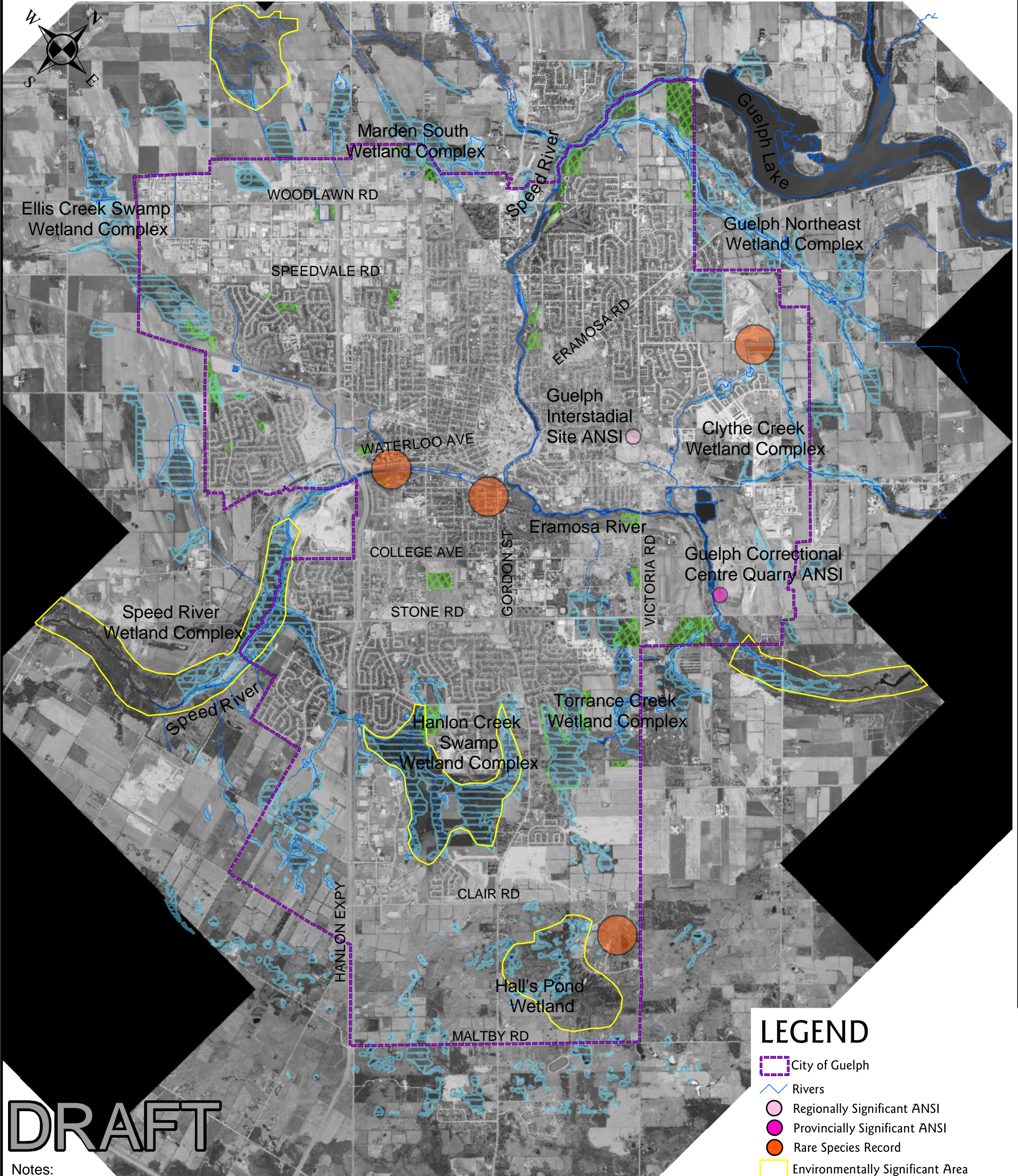


MAP 1: Existing Natural Heritage Features in the City of Guelph



DRAFT

Notes:
 1) This mapping has been derived from the most current digital information provided by the City/GRCA, but needs to be updated and refined. Some changes may also result from the Natural Heritage Study process.
 2) ANSI and Rare Species locations from Natural Heritage Information Centre website database; Wetland mapping layers from GRCA; all remaining layers from City of Guelph Official Plan (June 2002 Consolidation) as per Schedules 1 & 2.

LEGEND

- City of Guelph
- Rivers
- Regionally Significant ANSI
- Provincially Significant ANSI
- Rare Species Record
- Environmentally Significant Area
- Significant Woodland (>1 ha)
- Wetland

0 0.5 1 2 Kilometers



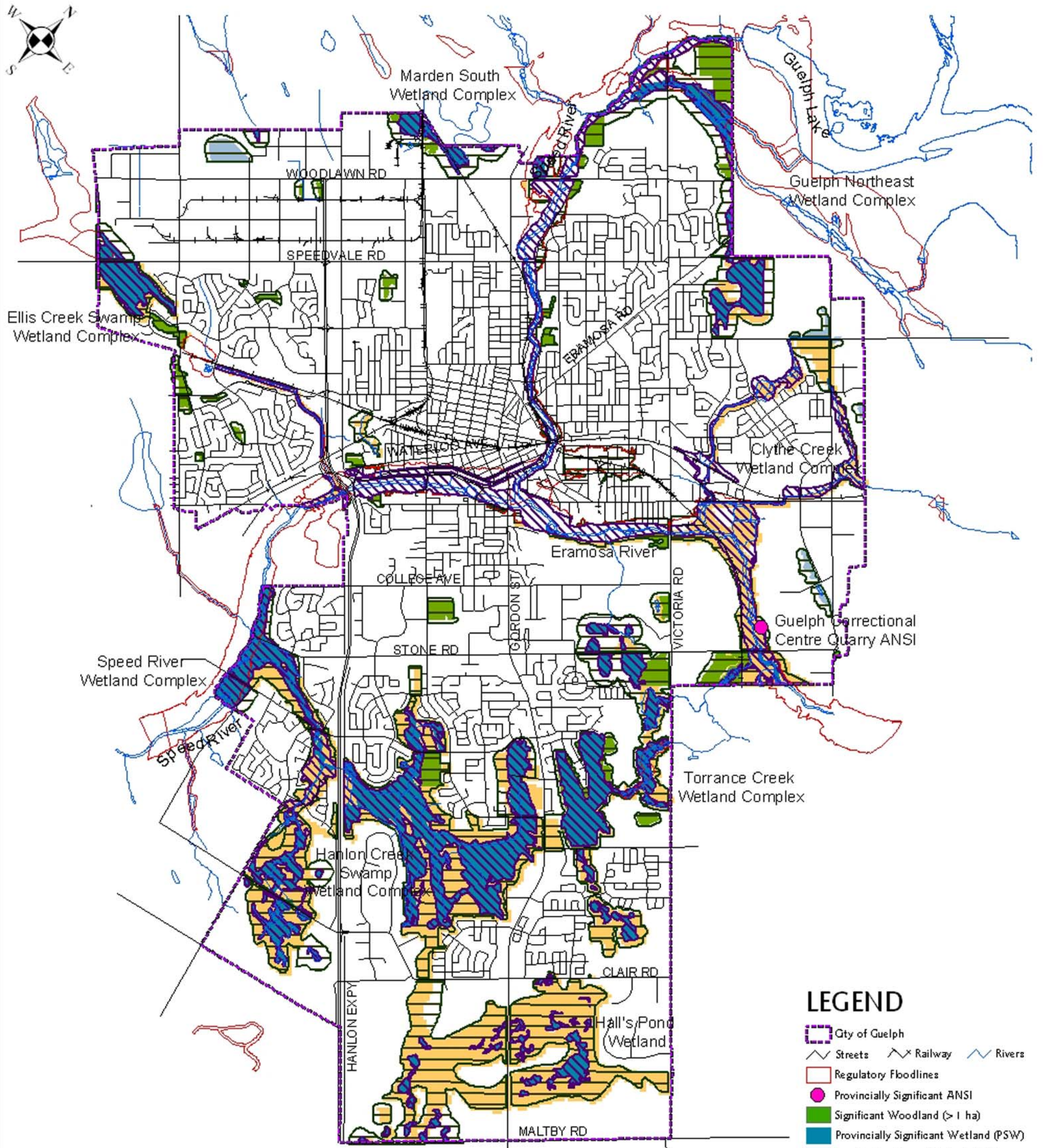
City of Guelph Natural Heritage Strategy Phase 1: Terrestrial Inventory Design & Defining Locally Significant Natural Areas

Dougan & Associates
 Ecological Consulting Services

Ecological Outlook
 Landscape, Ecology &
 Environmental Services

About & Associates Inc.
 Arborists • Ecologists
 Landscape Designers

MAP 2: Core and Non-Core Greenlands in the City of Guelph



DRAFT

Notes:
 1) This mapping has been derived from the most current digital information provided by the City/GRCA, but needs to be updated and refined. Some changes may also result from the Natural Heritage Study process.
 2) All digital layers correspond to Schedules 1 & 2 of City of Guelph Official Plan (June 2002 consolidation).

0 0.3 0.6 1.2 Meters



City of Guelph Natural Heritage Strategy Phase 1: Terrestrial Inventory Design & Defining Locally Significant Natural Areas

Dougan & Associates
 Ecological Consulting Services

Ecological Outlook
 Landscape, Ecology &
 Environmental Services

Aboud & Associates Inc.
 Arborists • Ecologists
 Landscape Designers