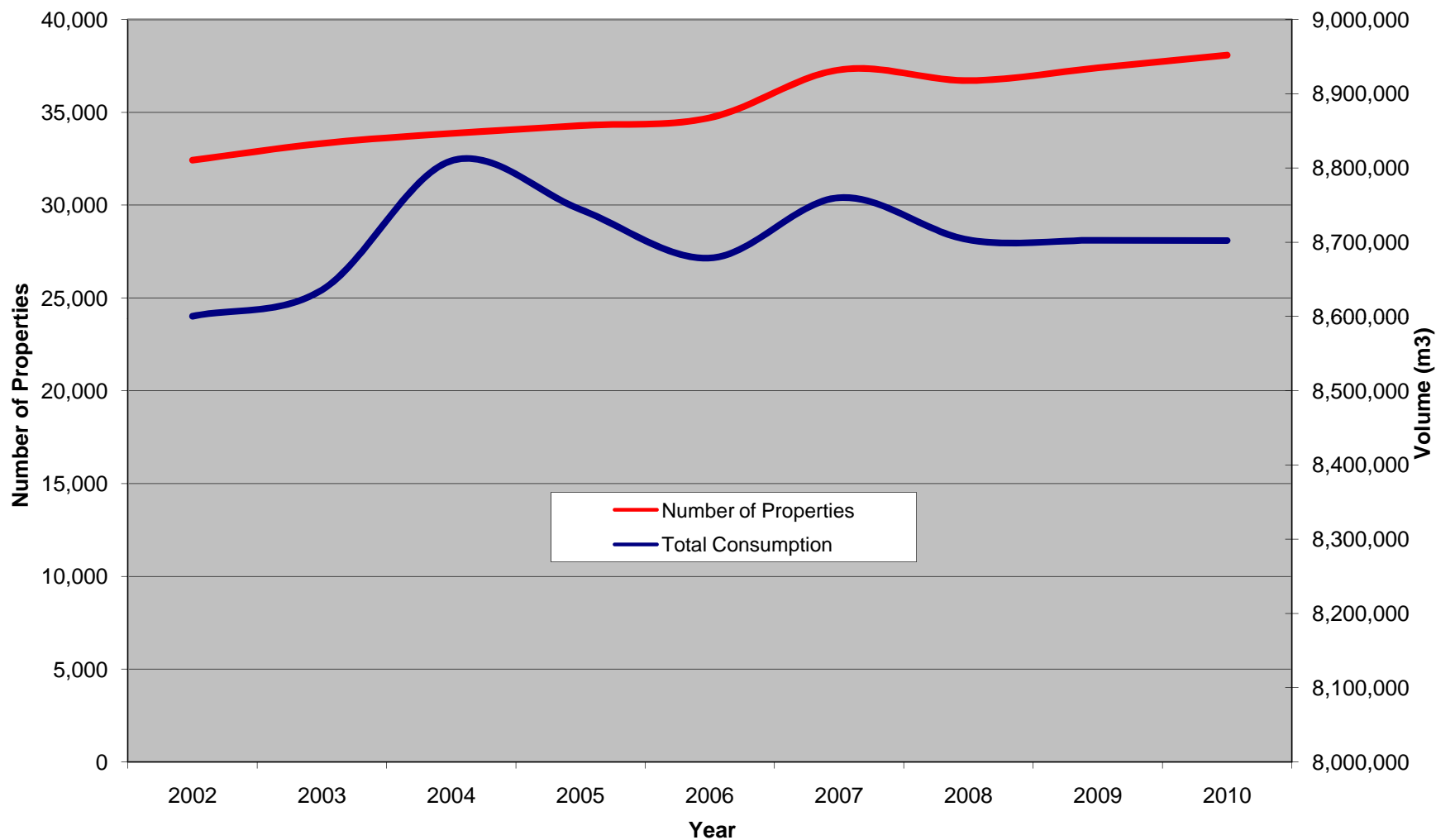


City of Guelph and Guelph Hydro Data Analysis							Guelph Hydro Data Only		
Year	Residential Properties	Residential Consumption	ICI Properties	ICI Consumption	Total Analyzed Properties	Total Analyzed Consumption	Total Number of Properties*	Total Consumption	Unaccounted For Water**
2001	30,231	8,739,786	987	5,619,985	31,218	14,359,771	31,103	17,744,973	3,385,202
2002	31,483	8,579,402	988	5,427,121	32,471	14,006,523	32,078	17,032,539	3,026,016
2003	32,424	8,600,305	988	5,450,567	33,412	14,050,872	33,088	16,975,912	2,925,040
2004	33,327	8,635,623	992	5,280,228	34,319	13,915,851	34,231	16,681,157	2,765,306
2005	33,863	8,809,427	996	5,196,526	34,859	14,005,953	35,285	16,704,688	2,698,735
2006	<i>Insufficient Data</i>						<i>Insufficient Data</i>		<i>Insufficient Data</i>
2007	34,709	8,678,635	1,040	4,665,884	35,749	13,344,519	37,907	16,239,135	2,894,616

*Note: Unlike the Property Analysis, this number does not include individual units for apartments or condominiums. These numbers range from approx. 3500 - 4000 and vary from year to year.

**Note: This is due to the variance in the databases; some properties appear on one but not on the other, and vice versa. Identification of these properties is possible, but time consuming.

Residential Growth Forecast



Residential	Number of Properties								
	2002	2003	2004	2005	2006	2007	2008	2009	2010
Low Density	22,740	23,356	23,934	24,636	25,042	25,169	25,936	26,448	26,959
Medium Density	3,703	3,863	4,052	4,098	4,143	4,187	4,341	4,436	4,532
High Density	4,275	4,468	4,467	4,550	4,786	5,021	4,993	5,107	5,221
Overall	32,424	33,327	33,863	34,286	34,709	37,292	36,713	37,397	38,082
	Total Consumption								
	2002	2003	2004	2005	2006	2007	2008	2009	2010
Low Density	5,680,627	5,573,113	5,534,082	5,526,170	5,730,506	5,662,909	5,655,469	5,666,203	5,676,937
Medium Density	800,855	823,081	827,432	822,089	818,229	814,368	814,962	814,187	813,412
High Density	4,275	4,468	4,467	4,550	4,786	5,021	4,582	4,579	4,575
Overall	8,600,305	8,635,623	8,809,427	8,744,031	8,678,635	8,759,942	8,703,113	8,702,670	8,702,228

Property Code	Description	Total Consumption								Average Annual Growth
		2001	2002	2003	2004	2005	2006	2007	2010	
Low Density Residential										
301	Single-family detached not on water)	5,680,627	5,573,113	5,534,082	5,526,170	5,730,506	5,662,909	5,595,313	5,640,405	-0.12%
Medium Density Residential										
311	Semi-detached residential	383,521	392,913	406,206	404,182	404,751	399,589	394,426	407,501	0.84%
309	Freehold townhouse/rowhouse	83,172	103,362	115,951	127,328	135,339	136,523	137,706	173,335	9.65%
332	Duplex	108,344	104,527	105,893	100,223	97,891	96,045	94,198	86,573	-3.30%
305	Link home	24,068	24,046	23,141	23,050	22,480	23,294	24,107	23,016	-0.69%
322	Semi-detached with both units under one ownership	30,181	28,241	27,403	26,923	25,809	27,294	28,779	26,156	-2.21%
334	Residential property with four self-contained units	38,347	32,710	33,688	34,370	30,145	32,656	35,166	31,041	-3.55%
333	Residential property with three self-contained units	33,527	32,734	34,197	31,088	28,381	30,150	31,918	28,325	-2.71%
336	Residential property with six self-contained units	67,878	64,565	57,606	62,150	60,920	56,495	52,069	47,329	-5.47%
335	Residential property with five self-contained units	15,331	17,182	18,129	17,309	15,912	15,882	15,851	15,816	0.27%
127	Townhouse block - freehold units	724	575	867	809	461	305	148	-18	100.49%
High Density Residential										
370	Residential condominium	830,431	802,485	830,818	821,359	844,367	965,837	1,087,307	1,121,275	4.04%
340	Multi-residential, with seven or more self-contained units *(excludes row housing	1,129,273	1,102,891	1,071,256	1,044,489	981,979	950,828	919,677	809,587	-4.93%
378	Residential leasehold condominium corporation	0	0	39,488	128,576	142,560	73,243	3,926	111,400	n/a
352	Row housing, with seven or more units under single ownership	129,141	120,846	124,102	114,621	110,447	102,590	94,733	80,913	-7.05%
341	Multi-residential, with seven or more self-contained residential units, with small commercial unit(s	78,887	71,747	70,443	65,470	71,080	69,046	67,012	61,871	-3.69%
372	Life Lease - Return on Invest (guaranteed return or market value based return on investment)	31,272	31,679	31,218	29,989	29,390	29,021	28,651	26,958	-2.17%
374	Cooperative housing - non-equity	18,798	18,581	18,445	17,957	16,702	12,393	8,084	5,938	-19.48%
360	Rooming or boarding house	32,498	31,084	31,885	30,216	29,144	28,198	27,252	24,843	-3.97%
303	Residence with a commercial unit	10,230	10,310	9,895	10,337	10,056	10,010	9,963	9,848	-0.58%
302	More than one structure used for residential purposes with a least one of the structures occupied pe	7,315	7,140	7,638	8,393	8,234	8,905	9,575	10,508	4.94%
369	Vacant land condominium (residential-improved)	233	1,892	2,589	5,865	8,076	8,577	9,077	14,913	35.47%
100	Vacant residential land not on water	1,790	1,237	982	1,006	670	479	287	-437	-8.49%
261	Land owned by a non-farmer improved with a non-farm residence with a portion being farmed	0	0	0	0	0	-10	-20	-21	n/a
304	Residence with a commercial/industrial use building	1,257	741	723	982	899	771	642	514	-16.65%
221	Farm with a residence - with commercial/industrial operation	350	2,252	1,512	283	206	152	97	-650	-59.05%
211	Farm with residence - with or without secondary structures; with farm outbuildings	0	0	0	0	0	0	0	0	n/a
260	Vacant residential/commercial/industrial land owned by a non-farmer with a portion being farmed	0	0	0	0	0	0	0	0	n/a
365	Group Home as defined in the Municipal Act, 2001	1,107	943	753	1,158	1,614	1,614	1,614	2,056	6.01%
125	Residential development land	0	0	0	0	0	0	0	0	n/a
314	Clergy residence	530	750	512	534	593	531	469	444	-4.80%
377	Condominium parking space unit	954	856	883	786	815	711	607	502	-9.98%
Totals		8,739,786	8,579,402	8,600,305	8,635,623	8,809,427	8,744,031	8,678,635	8,759,942	
	All ICI	987	988	988	992	996	1,018	1,040	1,050	
	All Properties	8,740,773	8,580,390	8,601,293	8,636,615	8,810,423	8,745,049	8,679,675	8,760,992	

Property Code	Description	Analyzed Properties	Total Annual Usage (m3)	Avg. Per Property Usage (m3)	Avg. Per Day Usage (m3)
Low Density Residential					
301	Single-family detached not on water)	22,740	5,680,627	249.81	0.684
Medium Density Residential					
311	Semi-detached residential	1,876	383,521	204.44	0.560
309	Freehold townhouse/rowhouse	498	83,172	167.01	0.458
332	Duplex	393	108,344	275.68	0.378
305	Link home	139	24,068	173.15	0.474
322	Semi-detached with both units under one ownership	138	30,181	218.70	0.300
334	Residential property with four self-contained units	93	38,347	412.33	0.282
333	Residential property with three self-contained units	91	33,527	368.43	0.336
336	Residential property with six self-contained units	67	67,878	1,013.10	0.463
335	Residential property with five self-contained units	35	15,331	438.03	0.240
127	Townhouse block - freehold units	1	724	724.00	1.984
High Density Residential					
370	Residential condominium	3,818	830,431	217.50	0.596
340	Multi-residential, with seven or more self-contained units *(excludes row housing	178	1,129,273	6,344.23	17.381
378	Residential leasehold condominium corporation	0	0	0.00	0.000
352	Row housing, with seven or more units under single ownership	7	129,141	18,448.71	50.544
341	Multi-residential, with seven or more self-contained residential units, with small commercial unit(s	7	78,887	11,269.57	30.876
372	Life Lease - Return on Invest (guaranteed return or market value based return on investment)	4	31,272	7,818.00	21.419
374	Cooperative housing - non-equity	2	18,798	9,399.00	25.751
Other Residential					
360	Rooming or boarding house	66	32,498	492.39	1.349
303	Residence with a commercial unit	32	10,230	319.69	0.876
302	More than one structure used for residential purposes with a least one of the structures occupied pe	26	7,315	281.35	0.771
369	Vacant land condominium (residential-improved)	5	233	46.60	0.128
100	Vacant residential land not on water	6	1,790	298.33	0.817
261	Land owned by a non-farmer improved with a non-farm residence with a portion being farmed	0	0	0.00	0.000
304	Residence with a commercial/industrial use building	5	1,257	251.40	0.689
221	Farm with a residence - with commercial/industrial operation	1	350	350.00	0.959
211	Farm with residence - with or without secondary structures; with farm outbuildings	0	0	0.00	0.000
260	Vacant residential/commercial/industrial land owned by a non-farmer with a portion being farmed	0	0	0.00	0.000
365	Group Home as defined in the Municipal Act, 2001	1	1,107	1,107.00	3.033
125	Residential development land	0	0	0.00	0.000
314	Clergy residence	1	530	530.00	1.452
377	Condominium parking space unit	1	954	954.00	2.614
Totals					
	All Residential	30,231	8,739,786	1,949	5.340
	All ICI	987	5,619,985	5,694	15.600
	All Properties	31,218	14,359,771	460	1.260

Property Code	Description	Analyzed Properties	Total Annual Usage (m3)	Avg. Per Property Usage (m3)	Avg. Per Day Usage (m3)
Low Density Residential					
301	Single-family detached not on water)	23,356	5,573,113	238.62	0.654
Medium Density Residential					
311	Semi-detached residential	2,059	392,913	190.83	0.523
309	Freehold townhouse/rowhouse	632	103,362	163.55	0.448
332	Duplex	417	104,527	250.66	0.343
305	Link home	144	24,046	166.99	0.457
322	Semi-detached with both units under one ownership	145	28,241	194.77	0.267
334	Residential property with four self-contained units	104	32,710	314.52	0.215
333	Residential property with three self-contained units	96	32,734	340.98	0.311
336	Residential property with six self-contained units	70	64,565	922.36	0.421
335	Residential property with five self-contained units	35	17,182	490.91	0.269
127	Townhouse block - freehold units	1	575	575.00	1.575
High Density Residential					
370	Residential condominium	4,075	802,485	196.93	0.540
340	Multi-residential, with seven or more self-contained units *(excludes row housing	178	1,102,891	6,196.02	16.975
378	Residential leasehold condominium corporation	0	0	0.00	0.000
352	Row housing, with seven or more units under single ownership	9	120,846	13,427.33	36.787
341	Multi-residential, with seven or more self-contained residential units, with small commercial unit(s	7	71,747	10,249.57	28.081
372	Life Lease - Return on Invest (guaranteed return or market value based return on investment)	4	31,679	7,919.75	21.698
374	Cooperative housing - non-equity	2	18,581	9,290.50	25.453
Other Residential					
360	Rooming or boarding house	66	31,084	470.97	1.290
303	Residence with a commercial unit	32	10,310	322.19	0.883
302	More than one structure used for residential purposes with a least one of the structures occupied pe	26	7,140	274.62	0.752
369	Vacant land condominium (residential-improved)	10	1,892	189.20	0.518
100	Vacant residential land not on water	6	1,237	206.17	0.565
261	Land owned by a non-farmer improved with a non-farm residence with a portion being farmed	0	0	0.00	0.000
304	Residence with a commercial/industrial use building	5	741	148.20	0.406
221	Farm with a residence - with commercial/industrial operation	1	2,252	2,252.00	6.170
211	Farm with residence - with or without secondary structures; with farm outbuildings	0	0	0.00	0.000
260	Vacant residential/commercial/industrial land owned by a non-farmer with a portion being farmed	0	0	0.00	0.000
365	Group Home as defined in the Municipal Act, 2001	1	943	943.00	2.584
125	Residential development land	0	0	0.00	0.000
314	Clergy residence	1	750	750.00	2.055
377	Condominium parking space unit	1	856	856.00	2.345
Totals					
	All Residential	31,483	8,579,402	1,798	4.927
	All ICI	988	5,427,121	5,493	15.049
	All Properties	32,471	14,006,523	431	1.182

Property Code	Description	Analyzed Properties	Total Annual Usage (m3)	Avg. Per Property Usage (m3)	Avg. Per Day Usage (m3)
Low Density Residential					
301	Single-family detached not on water)	23,934	5,534,082	231.22	0.633
Medium Density Residential					
311	Semi-detached residential	2,129	406,206	190.80	0.523
309	Freehold townhouse/rowhouse	747	115,951	155.22	0.425
332	Duplex	394	105,893	268.76	0.368
305	Link home	150	23,141	154.27	0.423
322	Semi-detached with both units under one ownership	134	27,403	204.50	0.280
334	Residential property with four self-contained units	108	33,688	311.93	0.214
333	Residential property with three self-contained units	90	34,197	379.97	0.347
336	Residential property with six self-contained units	74	57,606	778.46	0.355
335	Residential property with five self-contained units	36	18,129	503.58	0.276
127	Townhouse block - freehold units	1	867	867.00	2.375
High Density Residential					
370	Residential condominium	4,237	830,818	196.09	0.537
340	Multi-residential, with seven or more self-contained units *(excludes row housing	178	1,071,256	6,018.29	16.488
378	Residential leasehold condominium corporation	32	39,488	1,234.00	3.381
352	Row housing, with seven or more units under single ownership	8	124,102	15,512.75	42.501
341	Multi-residential, with seven or more self-contained residential units, with small commercial unit(s	7	70,443	10,063.29	27.571
372	Life Lease - Return on Invest (guaranteed return or market value based return on investment)	4	31,218	7,804.50	21.382
374	Cooperative housing - non-equity	2	18,445	9,222.50	25.267
Other Residential					
360	Rooming or boarding house	66	31,885	483.11	1.324
303	Residence with a commercial unit	33	9,895	299.85	0.822
302	More than one structure used for residential purposes with a least one of the structures occupied pe	26	7,638	293.77	0.805
369	Vacant land condominium (residential-improved)	19	2,589	136.26	0.373
100	Vacant residential land not on water	6	982	163.67	0.448
261	Land owned by a non-farmer improved with a non-farm residence with a portion being farmed	0	0	0.00	0.000
304	Residence with a commercial/industrial use building	5	723	144.60	0.396
221	Farm with a residence - with commercial/industrial operation	1	1,512	1,512.00	4.142
211	Farm with residence - with or without secondary structures; with farm outbuildings	0	0	0.00	0.000
260	Vacant residential/commercial/industrial land owned by a non-farmer with a portion being farmed	0	0	0.00	0.000
365	Group Home as defined in the Municipal Act, 2001	1	753	753.00	2.063
125	Residential development land	0	0	0.00	0.000
314	Clergy residence	1	512	512.00	1.403
377	Condominium parking space unit	1	883	883.00	2.419
Totals					
	All Residential	32,424	8,600,305	1,852	5.075
	All ICI	988	5,450,567	5,517	15.114
	All Properties	33,412	14,050,872	421	1.152

Property Code	Description	Analyzed Properties	Total Annual Usage (m3)	Avg. Per Property Usage (m3)	Avg. Per Day Usage (m3)
Low Density Residential					
301	Single-family detached not on water)	24,636	5,526,170	224.31	0.615
Medium Density Residential					
311	Semi-detached residential	2,213	404,182	182.64	0.500
309	Freehold townhouse/rowhouse	836	127,328	152.31	0.417
332	Duplex	398	100,223	251.82	0.345
305	Link home	144	23,050	160.07	0.439
322	Semi-detached with both units under one ownership	140	26,923	192.31	0.263
334	Residential property with four self-contained units	110	34,370	312.45	0.214
333	Residential property with three self-contained units	102	31,088	304.78	0.278
336	Residential property with six self-contained units	73	62,150	851.37	0.389
335	Residential property with five self-contained units	35	17,309	494.54	0.271
127	Townhouse block - freehold units	1	809	809.00	2.216
High Density Residential					
370	Residential condominium	4,237	821,359	193.85	0.531
340	Multi-residential, with seven or more self-contained units *(excludes row housing	178	1,044,489	5,867.92	16.076
378	Residential leasehold condominium corporation	32	128,576	4,018.00	11.008
352	Row housing, with seven or more units under single ownership	7	114,621	16,374.43	44.861
341	Multi-residential, with seven or more self-contained residential units, with small commercial unit(s	7	65,470	9,352.86	25.624
372	Life Lease - Return on Invest (guaranteed return or market value based return on investment)	4	29,989	7,497.25	20.540
374	Cooperative housing - non-equity	2	17,957	8,978.50	24.599
Other Residential					
360	Rooming or boarding house	66	30,216	457.82	1.254
303	Residence with a commercial unit	35	10,337	295.34	0.809
302	More than one structure used for residential purposes with a least one of the structures occupied pe	27	8,393	310.85	0.852
369	Vacant land condominium (residential-improved)	28	5,865	209.46	0.574
100	Vacant residential land not on water	6	1,006	167.67	0.459
261	Land owned by a non-farmer improved with a non-farm residence with a portion being farmed	0	0	0.00	0.000
304	Residence with a commercial/industrial use building	5	982	196.40	0.538
221	Farm with a residence - with commercial/industrial operation	1	283	283.00	0.775
211	Farm with residence - with or without secondary structures; with farm outbuildings	0	0	0.00	0.000
260	Vacant residential/commercial/industrial land owned by a non-farmer with a portion being farmed	0	0	0.00	0.000
365	Group Home as defined in the Municipal Act, 2001	2	1,158	579.00	1.586
125	Residential development land	0	0	0.00	0.000
314	Clergy residence	1	534	534.00	1.463
377	Condominium parking space unit	1	786	786.00	2.153
Totals					
	All Residential	33,327	8,635,623	1,876	5.140
	All ICI	992	5,280,228	5,323	14.583
	All Properties	34,319	13,915,851	405	1.111

Property Code	Description	Analyzed Properties	Total Annual Usage (m3)	Avg. Per Property Usage (m3)	Avg. Per Day Usage (m3)
Low Density Residential					
301	Single-family detached not on water)	25,042	5,730,506	228.84	0.627
Medium Density Residential					
311	Semi-detached residential	2,245	404,751	180.29	0.494
309	Freehold townhouse/rowhouse	854	135,339	158.48	0.434
332	Duplex	391	97,891	250.36	0.343
305	Link home	153	22,480	146.93	0.403
322	Semi-detached with both units under one ownership	129	25,809	200.07	0.274
334	Residential property with four self-contained units	119	30,145	253.32	0.174
333	Residential property with three self-contained units	98	28,381	289.60	0.264
336	Residential property with six self-contained units	71	60,920	858.03	0.392
335	Residential property with five self-contained units	37	15,912	430.05	0.236
127	Townhouse block - freehold units	1	461	461.00	1.263
High Density Residential					
370	Residential condominium	4,319	844,367	195.50	0.536
340	Multi-residential, with seven or more self-contained units *(excludes row housing	178	981,979	5,516.74	15.114
378	Residential leasehold condominium corporation	32	142,560	4,455.00	12.205
352	Row housing, with seven or more units under single ownership	8	110,447	13,805.88	37.824
341	Multi-residential, with seven or more self-contained residential units, with small commercial unit(s	7	71,080	10,154.29	27.820
372	Life Lease - Return on Invest (guaranteed return or market value based return on investment)	4	29,390	7,347.50	20.130
374	Cooperative housing - non-equity	2	16,702	8,351.00	22.879
Other Residential					
360	Rooming or boarding house	66	29,144	441.58	1.210
303	Residence with a commercial unit	35	10,056	287.31	0.787
302	More than one structure used for residential purposes with a least one of the structures occupied pe	27	8,234	304.96	0.836
369	Vacant land condominium (residential-improved)	28	8,076	288.43	0.790
100	Vacant residential land not on water	6	670	111.67	0.306
261	Land owned by a non-farmer improved with a non-farm residence with a portion being farmed	1	0	0.00	0.000
304	Residence with a commercial/industrial use building	5	899	179.80	0.493
221	Farm with a residence - with commercial/industrial operation	1	206	206.00	0.564
211	Farm with residence - with or without secondary structures; with farm outbuildings	0	0	0.00	0.000
260	Vacant residential/commercial/industrial land owned by a non-farmer with a portion being farmed	0	0	0.00	0.000
365	Group Home as defined in the Municipal Act, 2001	2	1,614	807.00	2.211
125	Residential development land	0	0	0.00	0.000
314	Clergy residence	1	593	593.00	1.625
377	Condominium parking space unit	1	815	815.00	2.233
Totals					
	All Residential	33,863	8,809,427	1,791	4.907
	All ICI	996	5,196,526	5,217	14.294
	All Properties	34,859	14,005,953	402	1.101

Property Code	Description	Analyzed Properties	Total Annual Usage (m3)	Avg. Per Property Usage (m3)	Avg. Per Day Usage (m3)
Low Density Residential					
301	Single-family detached not on water)	25,295	5,595,313	221.20	0.606
Medium Density Residential					
311	Semi-detached residential	2,259	394,426	174.60	0.478
309	Freehold townhouse/rowhouse	902	137,706	152.67	0.418
332	Duplex	400	94,198	235.50	0.323
305	Link home	157	24,107	153.55	0.421
322	Semi-detached with both units under one ownership	146	28,779	197.12	0.270
334	Residential property with four self-contained units	114	35,166	308.47	0.211
333	Residential property with three self-contained units	97	31,918	329.05	0.301
336	Residential property with six self-contained units	72	52,069	723.19	0.330
335	Residential property with five self-contained units	39	15,851	406.44	0.223
127	Townhouse block - freehold units	1	148	148.00	0.405
High Density Residential					
370	Residential condominium	4,777	1,087,307	227.61	0.624
340	Multi-residential, with seven or more self-contained units *(excludes row housing	185	919,677	4,971.23	13.620
378	Residential leasehold condominium corporation	32	3,926	122.69	0.336
352	Row housing, with seven or more units under single ownership	13	94,733	7,287.15	19.965
341	Multi-residential, with seven or more self-contained residential units, with small commercial unit(s	8	67,012	8,376.50	22.949
372	Life Lease - Return on Invest (guaranteed return or market value based return on investment)	4	28,651	7,162.75	19.624
374	Cooperative housing - non-equity	2	8,084	4,042.00	11.074
Other Residential					
360	Rooming or boarding house	66	27,252	412.91	1.131
303	Residence with a commercial unit	34	9,963	293.03	0.803
302	More than one structure used for residential purposes with a least one of the structures occupied pe	33	9,575	290.15	0.795
369	Vacant land condominium (residential-improved)	28	9,077	324.18	0.888
100	Vacant residential land not on water	13	287	22.08	0.060
261	Land owned by a non-farmer improved with a non-farm residence with a portion being farmed	12	-20	-1.67	-0.005
304	Residence with a commercial/industrial use building	8	642	80.25	0.220
221	Farm with a residence - with commercial/industrial operation	3	97	32.33	0.089
211	Farm with residence - with or without secondary structures; with farm outbuildings	2	0	0.00	0.000
260	Vacant residential/commercial/industrial land owned by a non-farmer with a portion being farmed	2	0	0.00	0.000
365	Group Home as defined in the Municipal Act, 2001	2	1,614	807.00	2.211
125	Residential development land	1	0	0.00	0.000
314	Clergy residence	1	469	469.00	1.285
377	Condominium parking space unit	1	607	607.00	1.663
Totals					
	All Residential	34,709	8,678,635	1,205	3.303
	All ICI	1,040	4,665,884	4,486	12.292
	All Properties	35,749	13,344,519	373	1.023