

Welcome to the

York Trunk Sanitary Sewer &

Paisley-Clythe Feedermain

Public Open House

March 8th, 2016



Welcome!

The purpose of this open house is to:

- Present the project overview plan
- Present the Phase 2A construction schedule
- Identify environmental, social, and traffic impacts
- Describe construction methods

Thank you for attending

Please fill out a comment form



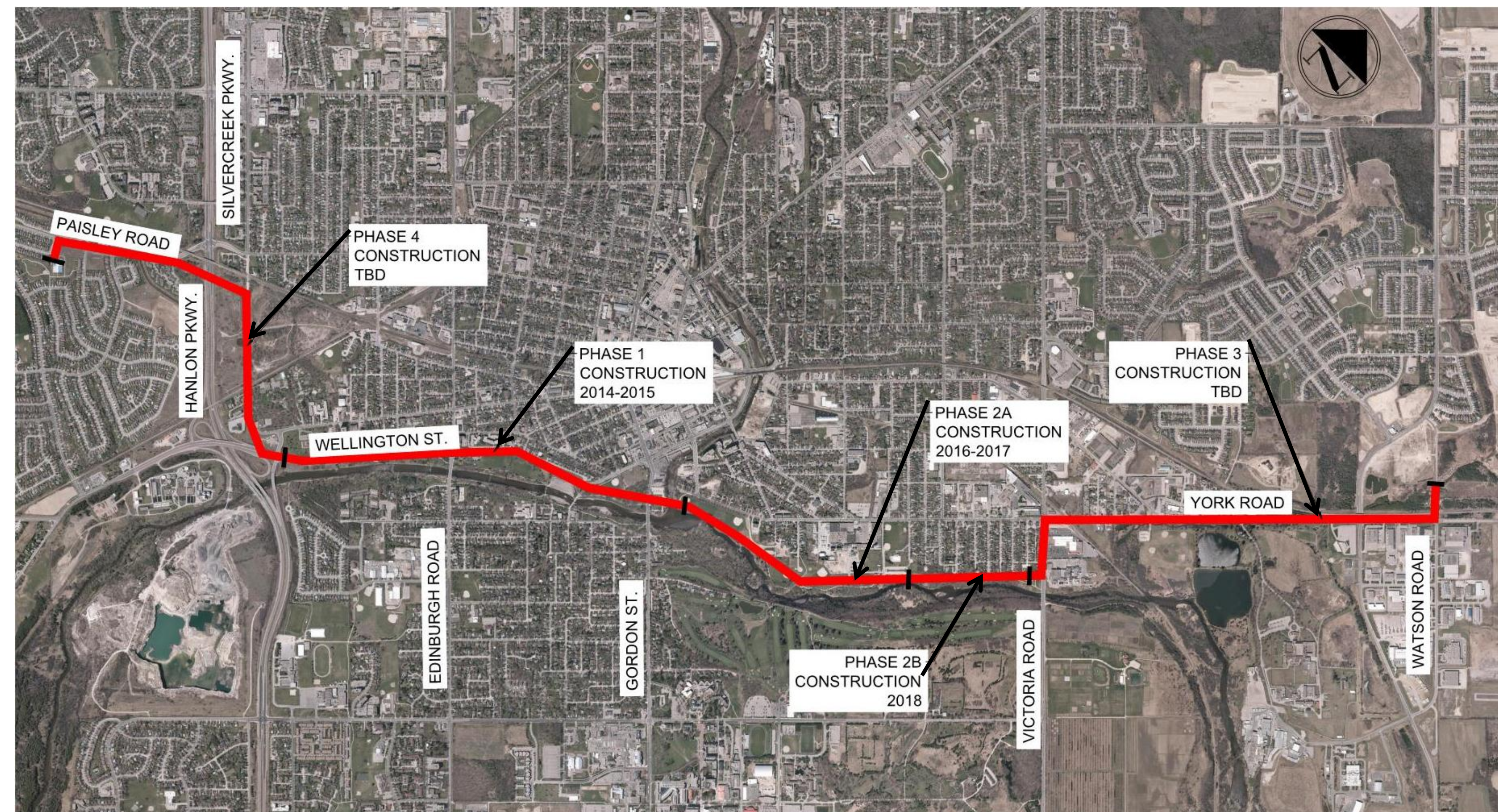
Soccer field in York Road Park



Baseball diamond in Eramosa River Park

Project Overview

- The York Trunk Sewer & Paisley-Clythe Feedermain is a \$30 million, multi-year infrastructure project. It is being completed in multiple phases.
- The City's 2009 Water and Wastewater Servicing Master Plan identified the project as a priority to meet our growing community's needs.
- It is the City's largest watermain and wastewater (sanitary) sewer project. It includes the installation of about 6.2 km of water pipes and 3.8 km of sewer pipes.



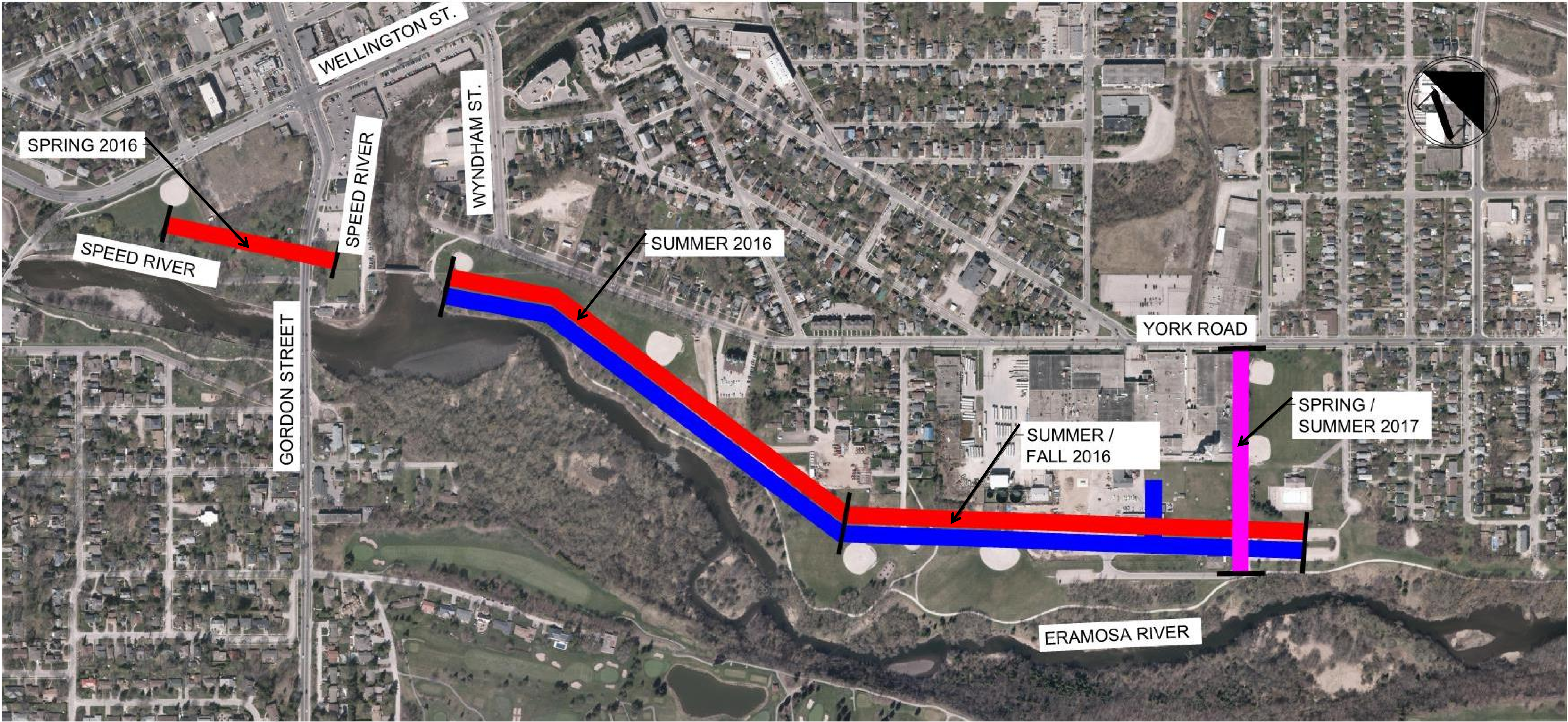
About Phase 2A

- Phase 2 will be completed in two stages. The first stage (2A) includes the installation of pipes from York Road Park at the covered bridge eastward through York Road and Eramosa River Parks to the F.M. Woods Pumping Station on Waterworks Place for a total distance of 1.5 km.
- Construction will begin in Spring 2016.
- Both the sewer and feedermain will be installed using open cut construction, in which a trench will be excavated and the pipes will be installed in the trench. The trench will then be filled and restored with clean material.
- Waterworks Place will be reconstructed with new sidewalks, curbs, and sewers.



Open Cut Construction in St. Catharines

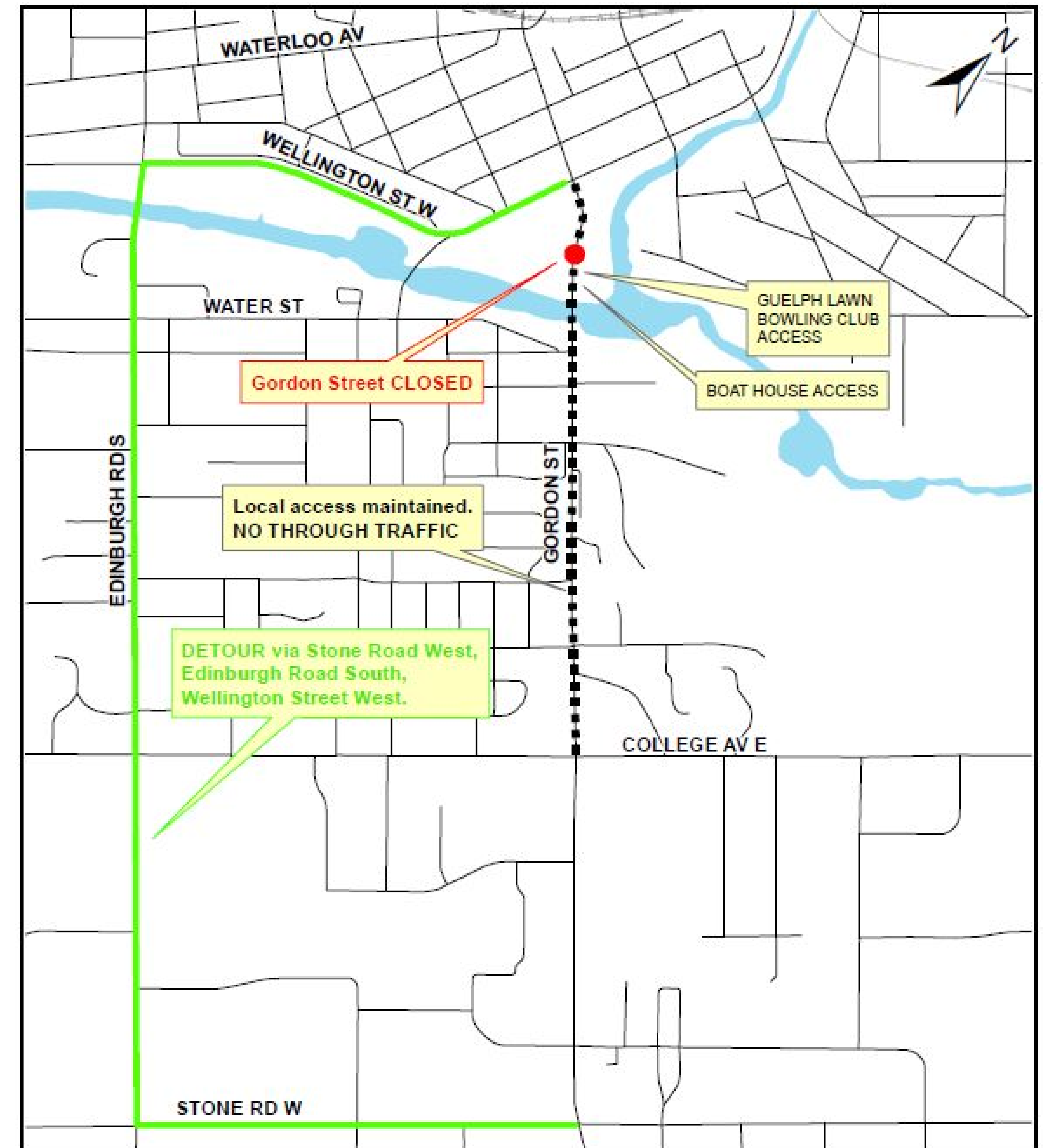
Phase 2A Map



-  Sanitary Sewer
-  Feedermain
-  Road Reconstruction

Gordon Street Closure

- Gordon Street will be closed between Wellington Street and the Speed River Bridge for a period of approximately three weeks starting in late April 2016
- Local access to businesses on Gordon Street will be maintained on either side of closure
- Through traffic including transit and cyclists will be detoured via Wellington Street, Edinburgh Road, and Stone Road
- Pedestrian traffic will be maintained
- Guelph Transit detour information will be available at guelphtransit.ca



Parks and Sports Fields

- Construction in Royal City Park will occur during spring of 2016
- Soccer fields and baseball diamonds in York Road Park and Eramosa River Park will be closed for the 2016 season to facilitate construction. The City is assisting sports fields users in making alternate plans.
- Lyon Park will be accessible from Boulton Avenue while Waterworks Place is under construction in 2016-2017
- Some public parking lots will be closed within York Road Park and Eramosa River Park during construction. Closures will be signed and will indicate alternate parking options.
- The Eramosa River Trail will remain open during construction. Trail access may be limited temporarily in some areas.



About the Former Landfill

- **Parts of the sanitary sewer and feedermain will be constructed through a former landfill**
- **The landfill was in use until 1958 and accepted both industrial and residential waste**
- **It contains materials such as brick, glass, construction materials, fibreglass and household waste**
- **The City has completed extensive testing of soil and groundwater and is prepared to manage any waste encountered**
- **Area residents and park users may occasionally smell nuisance odours like rotting garbage, mothballs or petroleum during work within the former landfill**
- **No adverse health effects are expected**
- **Excavated material will be taken offsite**

Construction Methods

- The construction route was designed to minimize impact on trees and traffic
- The Gordon Street closure will occur in late April after most University of Guelph students have left
- 66 new trees will be planted
- Project staff will continue to coordinate with the Grand River Conservation Authority, the Ministry of Natural Resources, and the City's Environmental Department throughout the project
- Odour issues will be minimized by only excavating small sections and filling them in at the end of each day
- Air quality monitoring will be completed throughout the construction period



Eramosa River Park



Eramosa River Park

Comments or Questions?



Mr. Majde Qaqish, P.Eng.

Project Engineer

**Engineering and Capital
Infrastructure Services**

City of Guelph

1 Carden Street

Guelph, ON N1H 3A1

Telephone: 519-822-1260 x 2225

Email: majde.qaqish@guelph.ca

Mr. Mani Ruprai, P.Eng.

Vice President, Infrastructure

WSP | MMM Group

100 Commerce Valley Drive West

Thornhill, ON L3T 1A0

Telephone: 905-882-4211 x 6548

Email: ruprain@mmm.ca

Information about all Guelph's construction projects is at guelph.ca/construction